

SPECIFICATIONS

GNSS

GPS	L1 C/A, L1C, L2P(Y), L2C, L5
GLONASS	L1, L2, L3
BDS	B1I, B2I, B3I, B1C, B2a, B2b
GALILEO	E1, E5a, E5b, E6
QZSS	L1, L2, L5
SBAS	L1
Data format	NMEA-0183
I/O protocol	RTCM3.X
Update rate	20Hz max
Re-capture time	<1s
Cold start	<40s

Positioning Accuracy

Single (RMS)	Horizontal :1.5m Vertical :2.5m
DGPS(RMS)	Horizontal :0.4m Vertical:0.8m
RTK(RMS)	Horizontal : ±(8mm+1ppm) Vertical: ±(15mm+1ppm)
Time accuracy (RMS)	20ns
Static(RMS)	Horizontal: ±(2.5mm+1ppm) Horizontal : ±(5mm+1ppm)
Speed accuracy (RMS)	0.03m/s
IMU tilt(60° below)	<2cm

Communication

Bluetooth	BR+EDR+BLE
WIFI	802.11 b/g/n
Network	LTE FDD: B1/2/3/4/5/7/8/12/13/ 18/19/20/25/26/28 LTE TDD: B38/39/40/41 WCDMA: B1/2/4/5/6/8/19 GSM: B2/3/5/8
Radio	Power: 5W/1W Protocol: TRIMTALK, TRIMMK3, SOUTH, TRANSEOT. Ect
Inner memory	32GB,
Camera	HD super wide-angle camera, support AR stakeout

Indicator

Power	Power indicator
satellite	Positioning and blink
Data link	Correction and blink

Power

battery	7.4V, 6500mAh
Working time	24 hours working time (Rover / Static)
Charge	Support USB PD 15V/2A Support 5V/3A

Environment

Working	-20°C~+60°C
Storage	-20°C~+70°C
Protection	1.5 meter normal fall down/ 1 meter water immerse
Level	IP68

Physical

Material	Magnesium alloy
Size	Φ140mm*85mm
Weight	≤890g

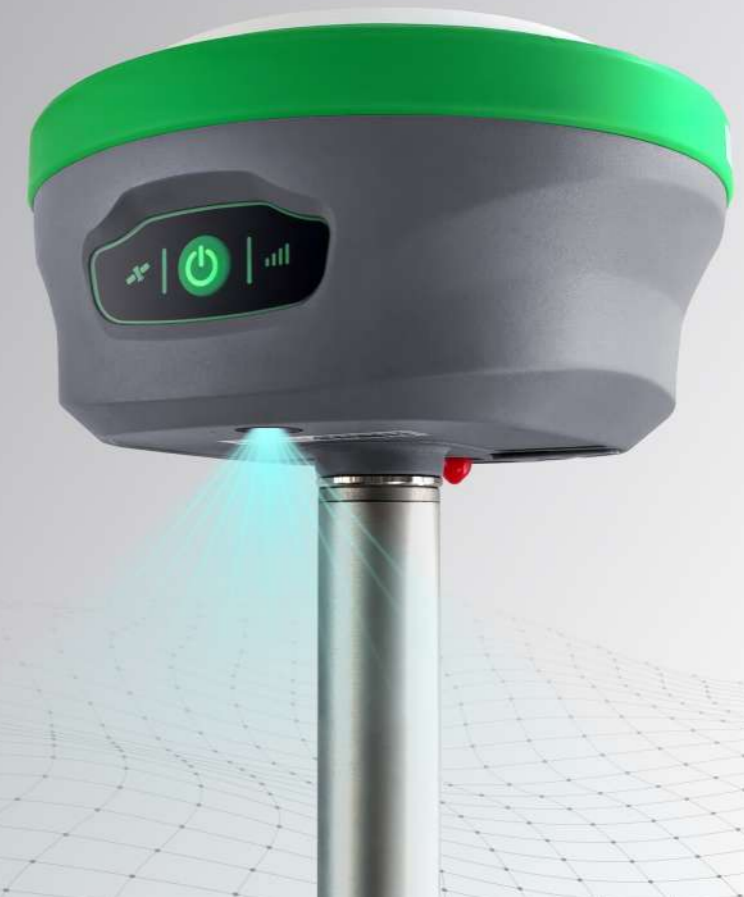
User interface

Operation system	Linux + Qualcomm Cortex-A7
Button	Single button
WEB interface	access the internal web interface management via WiFi , users are able to monitor the receiver status and change the configurations easily
VPN function	With VPN configuration, our technician can remote to access in receiver at anywhere , to efficient improve after-sales support.

Website: www.kqgeo-gps.com
Address: 8FBD Building, No.980 High-tech DevZone of
East Lake, Wuhan, Hubei, China
Mobile/ Whatsapp: +86 15527465464

KanQ
INSTRUMENT

KQ M10T GNSS RECEIVER



AR Visual



WEB UI control



Advanced RTK engine



Fast-Charge



IMU tilt



1408 channels tracking



AR VISUAL



IP68 LEVEL



LONG ENDURANCE



5W RADIO MODULE

SUPPER TRACKING CAPACITY

- ▶ 1408 channels and full -frequency RTK engine and full star RTK technology. Can against most of the complex conditions.

Robustness & Durability

- ▶ IP68 protection level, with over 30 times 2 meter fall down testing and water immerse inspection, it's Seamless design to protect in cruel field working.

VPN advanced function

- ▶ To reduce the inconvenience and improve our distributor Work efficiency, this function is highly remove the anxious from surveyors, Manufacturer can still remote and access in receiver at anywhere to check receiver status after make the VPN setting.

AR stakeout

- ▶ Immersive AR visual stakeout to vividly display ground stakeout points in the software, obviously improve the working efficiency .

4th generation IMU sensor

- ▶ The newest IMU sensor makes the Tilt working more convenient, it eliminates the loss of Inertial-Measurement-Usable Status in most scenarios, no need frequency to shake the carbon pole.

Reliable Precision

- ▶ Support the full-frequency film RTK positioning solution. The embedded multi-frequency point anti-interference technology. Significantly improved the initialization speed, measurement accuracy and reliability in complex environment.



M10T is the best choice of GNSS RTK with high specifications, stable performance and affordable cost. AR camera function is the high-end receiver configuration, 5W internal radio make the field working is more convenient that no need external radio to reach 20KM distance. IMU Tilt WEB UI and VPN function offers unparalleled accuracy and enjoyment for surveyors.